



Connexin 43 (Phospho Ser279) Rabbit pAb

Catalog No	YP-Ab-17659
Isotype	IgG
Reactivity	Human, Mouse, Rat
Applications	IHC, WB
Gene Name	GJA1 GJAL
Protein Name	Gap junction alpha-1 protein (Connexin-43) (Cx43) (Gap junction 43 kDa heart protein)
Immunogen	Synthesized peptide derived from human Connexin 43 (Phospho Ser279)
Specificity	This antibody detects endogenous levels of Connexin 43 (Phospho Ser279) Rabbit pAb at Human, Mouse, Rat
Formulation	Liquid in PBS containing 50% glycerol, and 0.02% sodium azide.
Source	Rabbit, polyclonal
Purification	The antibody was affinity-purified from rabbit serum by affinity-chromatography using specific immunogen.
Dilution	WB 1:500-2000 IHC 1:50-200
Concentration	1 mg/ml
Purity	≥90%
Storage Stability	-20°C/1 year
Synonyms	Gap junction alpha-1 protein (Connexin-43) (Cx43) (Gap junction 43 kDa heart protein)
Observed Band	43kD
Cell Pathway	Cell membrane ; Multi-pass membrane protein . Cell junction, gap junction . Endoplasmic reticulum . Localizes at the intercalated disk (ICD) in cardiomyocytes and the proper localization at ICD is dependent on TMEM65. .
Tissue Specificity	Expressed in the heart and fetal cochlea.
Function	caution:PubMed:11741837 reported 2 mutations (Phe-11 and Ala-24) linked to non-syndromic autosomal recessive deafness (DFNBG). These mutations have subsequently been shown (PubMed:12457340) to involve the pseudogene of connexin-43 located on chromosome 5.,caution:PubMed:7715640 reported a mutation Pro-364 linked to congenital heart diseases. This was later shown (PubMed:8873667) to be an artifact.,disease:Defects in GJA1 are a cause of hypoplastic left heart syndrome (HLHS) [MIM:241550]. HLHS refers to the abnormal development of the left-sided cardiac structures, resulting in obstruction to blood flow from the left ventricular outflow tract. In addition, the syndrome includes underdevelopment of the left ventricle, aorta, and aortic arch, as well as mitral atresia or stenosis.,disease:Defects in GJA1 are the cause of autosomal dominant oculodentodigital dysplasia (ODDD) [MIM:164200]; al



Background

gap junction protein alpha 1(GJA1) Homo sapiens This gene is a member of the connexin gene family. The encoded protein is a component of gap junctions, which are composed of arrays of intercellular channels that provide a route for the diffusion of low molecular weight materials from cell to cell. The encoded protein is the major protein of gap junctions in the heart that are thought to have a crucial role in the synchronized contraction of the heart and in embryonic development. A related intronless pseudogene has been mapped to chromosome 5. Mutations in this gene have been associated with oculodentodigital dysplasia, autosomal recessive craniometaphyseal dysplasia and heart malformations. [provided by RefSeq, May 2014],

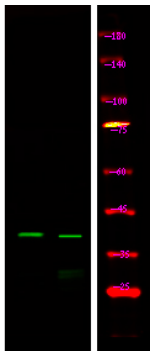
matters needing attention

Avoid repeated freezing and thawing!

Usage suggestions

This product can be used in immunological reaction related experiments. For more information, please consult technical personnel.

Products Images



Western Blot analysis of 1 HepG2 cell, 2 LPS 100ng/mL 30min treated ,using primary antibody at 1:1000 dilution. Secondary antibody(catalog#:RS23920) was diluted at 1:10000